



Vincent Square, Westminster
London SW1P

GARTONJONES.COM



Vincent Square, Westminster London, SW1P

£1,000 Per Week

We are delighted to offer this 3 bedroom apartment available to let within this popular development located on the 1st floor (lift) on the extremely sought after location of Vincent Square. The accommodation comprises of a separate kitchen, reception room with feature fireplace and direct views onto the private playing fields of Westminster School, there are 3 double bedrooms with the master benefitting from an en-suite and further guest family bathroom. Residents benefit from an on site porter and a secure underground parking space (under separate negotiation). Vincent House just a short walk from the renowned local landmarks which include the Houses of Parliament, Westminster Abbey, Tate Britain Gallery and St Johns Smith Square Concert Halls offering a variety of classical musical performances. The local transport links of Victoria Station are nearby providing mainline UK services including the Gatwick Express as well as the underground services of Victoria, Pimlico, St James Park and Westminster. The area has an abundance of amenities in the immediate area and following on from the extensive regeneration of Victoria street a selection of many new restaurants to compliment existing. Distinguished hotels like The Wellington, The Goring, St Ermins', The Westminster are all within very close proximity.

**Please note that new furniture and new carpet was installed 2 years ago - please refer to the inventory that can be requested from the agent

Minimum Term 12 Months
Deposit 6 Weeks
Council Tax Band H (London Borough of Westminster)
EPC Rating B (85)

- 3 Bedroom Apartment
- 1120 Square Feet (104 Sq.M)
- 1st Floor (Lift)
- Separate Integrated Kitchen
- 2 Bathrooms (En-Suite)
- Porter
- Furnished
- Available: 30th October 2025
- Views Onto The Private Playing Fields of Westminster School
- Moments From Transport Links of Pimlico, St James, Park, Victoria & Westminster

GARTON JONES.COM

49 Marsham Street Lettings:

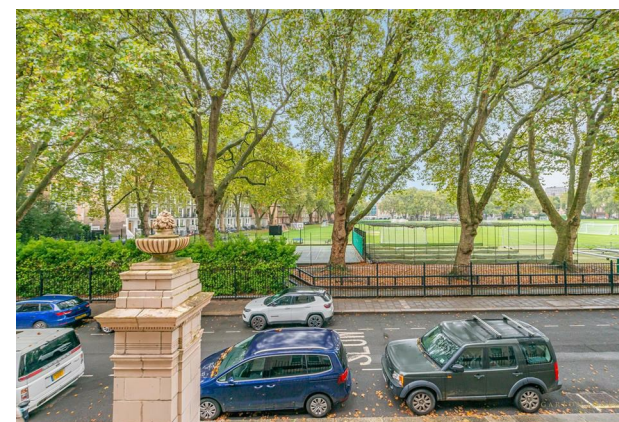
London

SW1P 3DP

+44 (0) 20 7340 0480

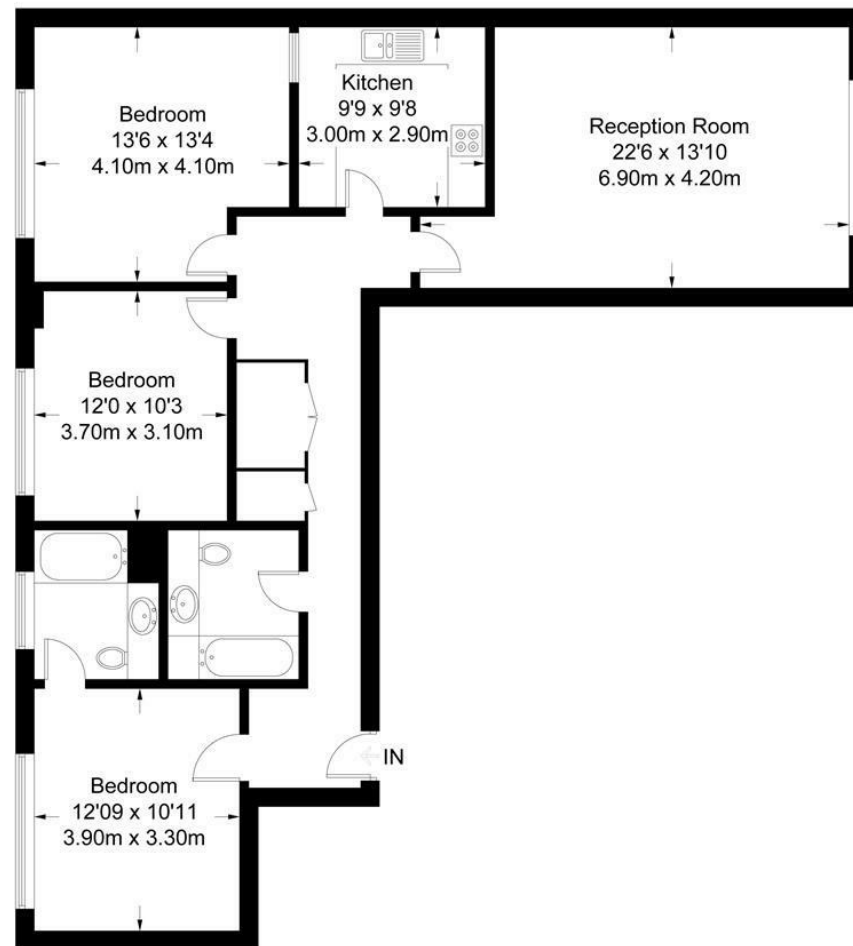
westminster@gartonjones.com

www.gartonjones.com



Vincent House

Approximate Gross Internal Area = 1120 sq ft / 104 sq m



First Floor

